



# Collaboration and Inclusion

## Designing for Access

Vera Roberts

Adaptive Technology Resource Centre

# New Conceptual Framework

- Web accessibility is not and should not be a *one interface fits all* effort
- Accessibility should be about enabling a match between user needs and options for content type, control and display
- Accessibility could be just as important to a user accessing content through a portable device as to a user with a disability

# Things Said at Participate!

## Collaborate! That Relate:

- don't need to try to create a unique interface but rather need an **adaptable** interfaces  
—René Barsalo
- we must create a “**natural environment**”  
—Cathy King
- **malleability** is more important than uniformity”  
—Ron Waakary

# Facilitating Accessible Collaboration

1. Support collaborative/transformational process by individuals
2. Support for automated collaboration across technologies
3. Practical aspects of collaborative tool interface design

# Collaboration by Individuals

- Supporting multiple authorship
  - Alternatives to copyright
  - Simple authoring technologies
- Metadata specifications
  - Creative Commons
  - Open Access
  - Transformation tools and authoring tools

# Automated Collaboration

- *The Semantic Web provides a common framework that allows data to be shared and reused across application, enterprise, and community boundaries. (W3C)*
- *"The Semantic Web is an extension of the current web in which information is given well-defined meaning, better enabling computers and people to work in cooperation." -- Tim Berners-Lee, James Hendler, Ora Lassila, [The Semantic Web](#), Scientific American, May 2001*

# Inclusive Collaborative Tools

- Consider that individuals will have different ways of interacting with collaborative tools and will have different needs in the collaborative contexts
- Content that is not accessible could be made accessible if individuals have access to free and effective tools for modality translations
- Authors who want to make accessible content need tools that will help them identify and correct barriers

# TILE (The Inclusive Learning Exchange)



The Inclusive Learning Exchange

## Preferences

Preferred Language:

- I would like to make the text on the screen easier to see.
- I would like to enhance the structure of the content.
- I would like to enhance the navigation of the content.
- I would like alternatives to visual content.
- I would like alternatives to textual content.
- I would like alternatives to auditory content.
- I would like to specify the URL of my personal stylesheet.
- I would like access to learner scaffolds.

[ [Home](#) | [Search](#) | [Preferences](#) | [vCard](#) | [Login](#) | [Upload](#) | [Save Session](#) | [About TILE](#) ]



## Toolbar

### [Edit Preferences](#)

#### Dictionary

#### Thesaurus

#### Search

#### TILE Login

Username:

Password:

[ [Create a new account](#) ]



Adaptive Technology Resource  
Centre

# A-Chat

TEST Installation - For Developers Only: TEST Installation - For Developers Only: Main Screen - Mi...

File Edit View Favorites Tools Help

Back Forward Stop Refresh Home Search Favorites Media Print Mail News RSS

Address <http://achat.atrc.utoronto.ca/cgi/achat2/login.pl> Go

### Messages

system	User has logged out.
Amanda	<a href="http://www.utoronto.ca/psy100/assignment1.html">www.utoronto.ca/psy100/assignment1.html</a>
jan	What's the URL?
Claude	Yeah
Anne	So I guess we should get started on the assignment.
Claude	Hi Amanda and Claude
Amanda	Hi jan
jan	Hello everyone
system	User has logged out.
system	User Anne has logged in.
system	User Claude has logged in.

### Options

[Edit Preferences](#) | [Help](#) | [Exit Chat](#)

### User List and History

[Full History](#) | [Refresh User List](#)

- [Amanda](#) (you)
- [Anne](#)
- [Claude](#)

### Compose Message

# A-Communicator

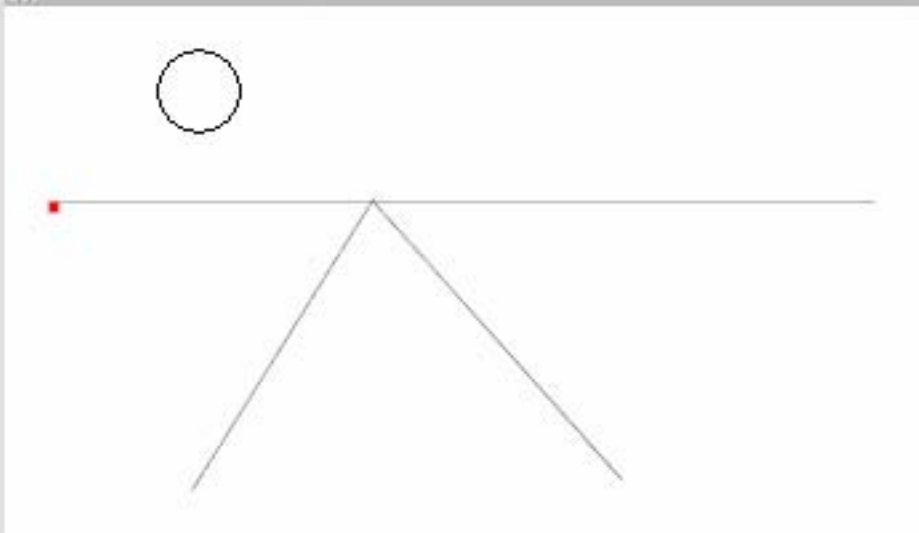
**ACommunicator - Chat**

**Chat**

jr12345> This is another example of linear perspective.  
system> Cathy describes StraightLine 3: right side of the road - the line converges with the left side line at the horizon so the road appears to dissappear into the distance.  
system> David describes StraightLine 2: left side of the road runs to the hoizon  
system> Amanda describes StraightLine 1: Horizon  
jr12345> let me show you an example...

**Compose Message**

**Whiteboard**



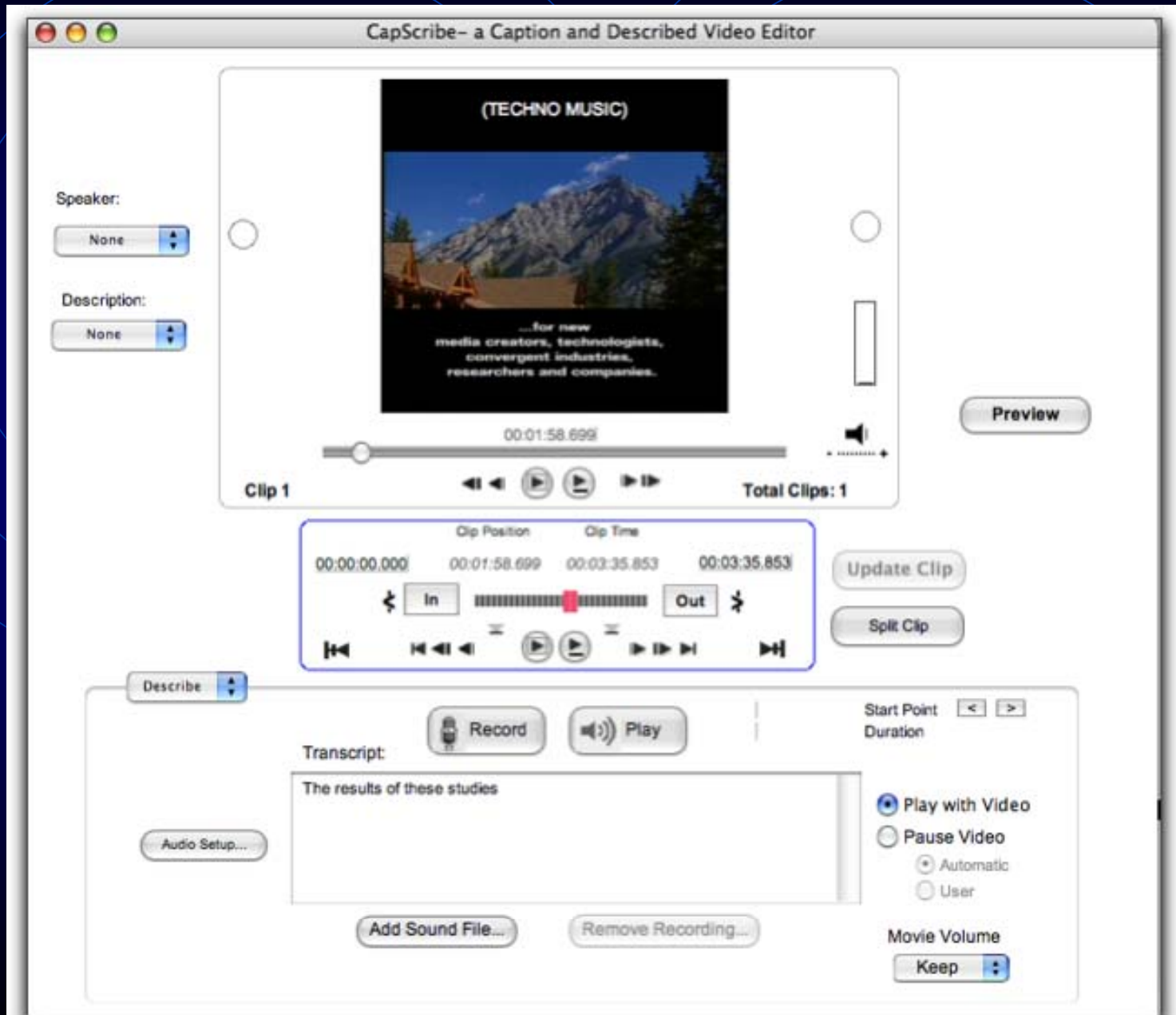
The whiteboard contains a diagram illustrating linear perspective. It features a horizontal line representing the horizon, with a small red square at its left end. Two lines converge downwards from a point on the horizon, forming a triangular shape that represents the road's edges. Above the horizon line, there is a circle representing the sun or moon. A toolbar at the top of the whiteboard includes icons for file operations (folder, save, print, trash), drawing tools (hand, pencil, eraser, square, circle, text, line, fill color), and a list icon.

**StraightLine 1 - Horizon**

**Descriptions for Whiteboard Objects**

Ellipse 4

# CapScribe



# A-Checker

(<http://www.atutor.ca/achecker/demo.php>)

The screenshot shows a Microsoft Internet Explorer browser window displaying the AChecker website. The browser's address bar shows the URL <http://www.atutor.ca/achecker/demo.php>. The website has a blue header with navigation links: [Welcome](#), [Development](#), [Support Forums](#), [MyATutor](#), [News](#), [Services](#), and [About](#). A search bar is located in the top left of the page content.

The main content area features the ATRC logo and the title "Web Accessibility Checker". A blue box on the right indicates "Experimental Version: 0.4.6". Below the title, there is a text input field for "Page:" and a "Check It" button. A link for "Guideline: [WCAG 1.0 AA HTML](#) (other guidelines)" is provided.

The "Login To ATRC Accessibility Checking" section includes a "Your Email Address:" field, a "Password:" field, and a "Login" button.

The "Why login?" section explains that logging in allows users to make decisions about accessibility problems and resolve them.

The "Don't have an account yet?" section asks users to fill in a form and select the "Request Account" button, noting that the process is fast and free, and the email address will not be used outside of the checker.

The left sidebar contains a "Projects" list with "AChecker Demo" highlighted, a "Newest Files" list with various language packs, a "News" section with recent updates, and a "Credits" section with the SourceForge.net logo.

The Windows taskbar at the bottom shows the Start button, several open applications (Cisco IP Soft..., Inbox - M..., Microsoft..., AChecke..., ATRC We..., Microsoft...), and the system tray with the time 10:57 AM.



# Web Accessibility Checker

Experimental  
Version: 0.5.1

Page:

Guideline: [WCAG 1.0 \(Level AA\)](#) ([other guidelines](#))

Status: Not logged in ([login](#))

Report: <http://www.georgewbush.com/>

Guideline status: **FAIL** [WCAG 1.0 \(Level AA\)](#)

Decisions: There are currently no decisions made on this file.

Problems: This file has [134 known problems](#) and [183 potential problems](#) for your selected guideline(s).  
Select any link below to view those problem details or [view all problem details](#).

## WCAG 1.0 (Level AA) Problems

Summary Of Accessibility  
Problems

Group	Known	Potential
<a href="#">Priority 1</a>	<a href="#">87</a>	<a href="#">83</a>
<a href="#">Priority 2</a>	<a href="#">47</a>	<a href="#">100</a>

# Relevant Links

- <http://inclusivelearning.ca> (TILE)
- [www.w3c.org](http://www.w3c.org) (World Wide Web Consortium)
- [www.imsglobal.org](http://www.imsglobal.org) (IMS Metadata Specs)
- [www.Sakaiproject.org](http://www.Sakaiproject.org) (SAKAI)
- <http://creativecommons.org> (Creative Commons)
- [www.inasp.info/peri/free.html](http://www.inasp.info/peri/free.html) (Open Access)
- <http://www.doaj.org/home> (Open Access)
- [http://osconf.kmdi.utoronto.ca/multimedia\\_archive.htm](http://osconf.kmdi.utoronto.ca/multimedia_archive.htm) (Archive of Open Access Conference)
- [www.cnice.utoronto.ca](http://www.cnice.utoronto.ca) (Accessible Tools)
- [www.utoronto.ca/atrc](http://www.utoronto.ca/atrc) (ATRC)