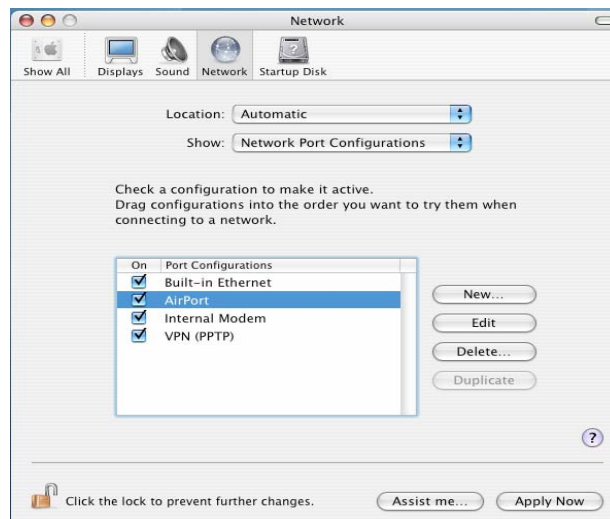


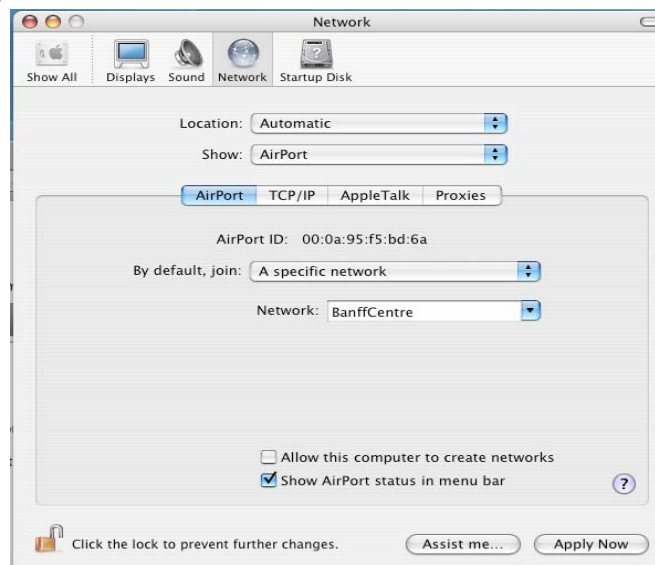
Mac OSX

Connecting to the Banff Centre Public Wireless Internet Connection

1. Go to **System Preferences: Network**
2. Place a **checkmark** by **AirPort** under **Port Configuration**
3. Click **Apply** Configure your settings as follows:
 - Place a **checkmark** in the **show AirPort status in menu bar**
4. Click **Apply Now**



5. Configure your settings as follows:
 - Place a **checkmark** in the **show AirPort status in menu bar**
6. Click **Apply Now**



Clicking on the AirPort icon in the Menu Bar will verify that you are connected to the BanffCentre public connection. This icon will also show the strength of your signal. The darker the icon; the stronger the signal.

Troubleshooting:

If you do not get the option that allows you to specify a network

- click on the Wireless icon on the Menu Bar and select **Turn Airport On**
- Go back and follow steps 4, 5 and 6.